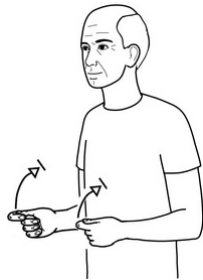


# PANCAKE DAY WORD SEARCH



Can you locate all of the pancake day related words below?



P	U	R	Y	S	T	B
A	C	E	R	T	U	E
N	N	T	N	A	T	R
C	T	T	E	C	E	R
A	P	U	K	K	T	I
K	T	B	H	A	D	E
E	W	P	T	P	U	S
S	O	M	A	E	R	C

# PANCAKE DAY WORD SEARCH



Use the Signalong sign descriptions below to find the words hidden in the wordsearch

**Working full "C" hand (palm back, pointing in) moves back across supporting full "O" hand (palm in, pointing forward).**

**Working bunched hand (palm in, pointing up) twists forwards and off supporting index (palm back, pointing in).**

**Flat hands together (palms facing, pointing in); working hand above, moves up to appropriate height. in several short movements. Directional sign.**

**Tucked hands (palms in, pointing forward), working hand in front, formation mimes tossing pancake.**

**Working "Y" hand (palm forward/in, pointing up) held at working side of mouth, twists at wrist across mouth to finish palm back pointing in/up by working side of face.**

**Working "N" hand (palm down, pointing forward/in) brushes along supporting palm and turns so that backs of fingers brush back to supporting fingertips.**

# PANCAKE DAY WORD SEARCH



## ANSWERS

**CREAM**

**BERRIES**

**STACK**

**PANCAKE**

**SYRUP**

**BUTTER**

Descriptions which are provided free of charge still remain the copyright of Signalong The Communication Charity and must reference handshape, orientation, placement and movement. Where these signs are distributed out of the parameters of which they were supplied, Signalong must be acknowledged.

This resource may be reproduced and distributed, but must remain in its original format.