

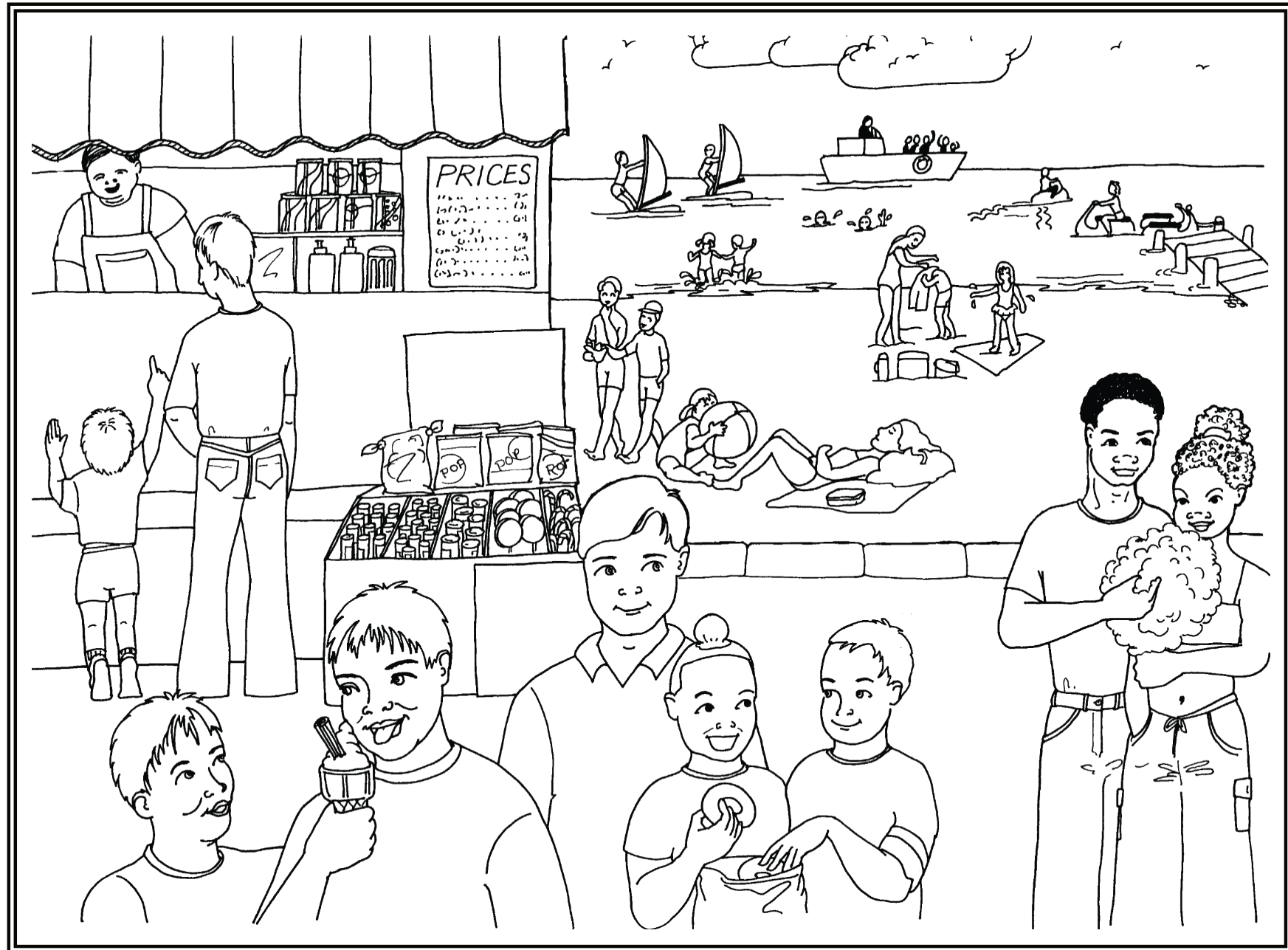
Social Awareness Resources

Discussion pictures are a useful way of setting sign vocabulary in context and providing a scaffold to elicit further vocabulary. We will be offering a series of pictures around the home and out and about to promote this. Each picture will have 12 signs to get you started and can also be coloured in.

Descriptions which are provided free of charge still remain the copyright Signalong The Communication Charity and must reference handshape, orientation, placement and movement. Where these signs are distributed out of the parameters of which they were supplied Signalong must be acknowledged.

Company Limited by Guarantee no 2922636 | Reg. Office: Signalong The Communication Charity, 1 Old Winery Business Park, Cawston, Norwich, Norfolk, NR10 4FE | VAT No. 661 9509 15

The Beach



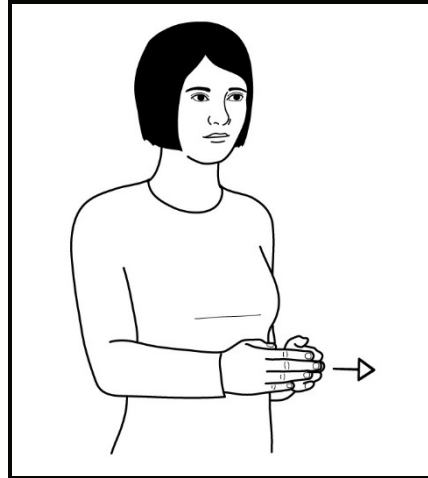
ICE CREAM



Diagrams, text and descriptions ©SIGNALONG

Working full "O" hand (palm in, pointing forward) moves to mouth; mime licking ice cream.

BOAT



Diagrams, text and descriptions ©SIGNALONG

Flat hands (palms in/back, pointing forward/in) with fingertips touching move forwards.

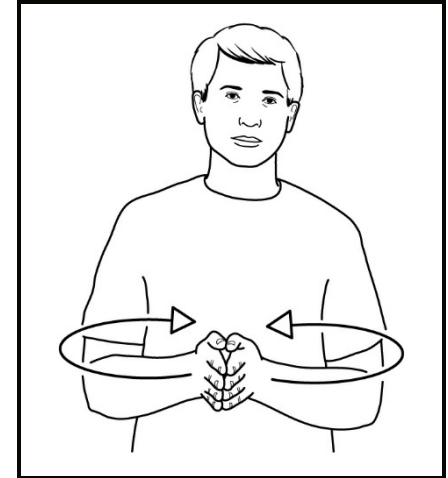
SEA



Diagrams, text and descriptions ©SIGNALONG

Working open hand (palm down, pointing forward), arm moves out in smooth wavy movement.

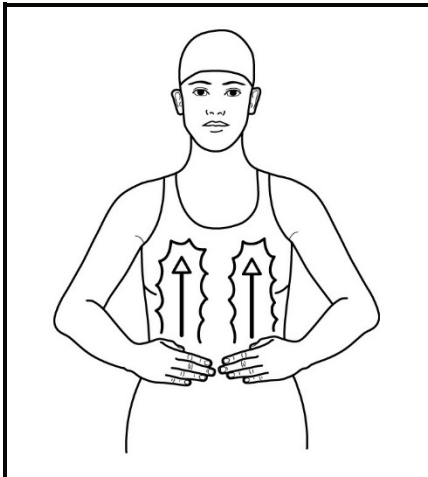
SWIMMING



Diagrams, text and descriptions ©SIGNALONG

Flat hands (palms together, pointing forward) circle out.

SWIMSUIT

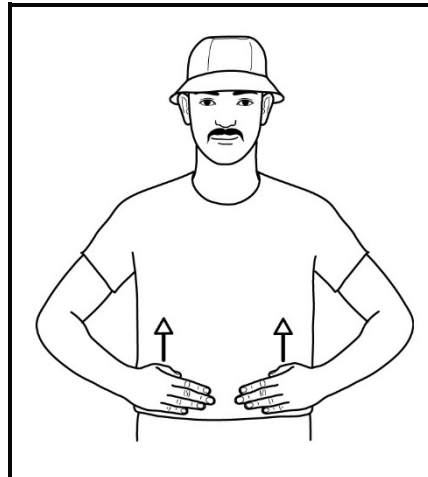


Diagrams, text and descriptions ©SIGNALONG

Flat hands (palms back, pointing in) brush up body.

May be preceded by 'swim' if necessary (Flat hands (palms together, pointing forward) circle out).

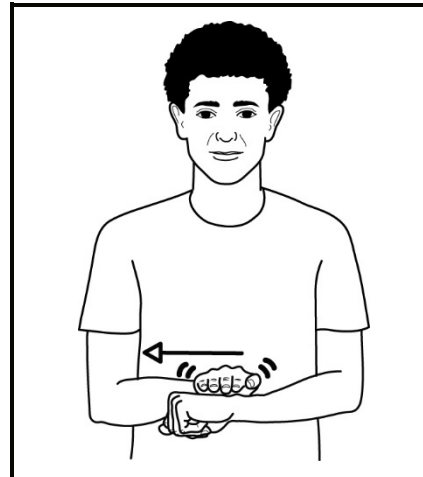
SWIMMING TRUNKS



Diagrams, text and descriptions ©SIGNALONG

Flat hands (palms back, pointing in) make small upward movement at waist.

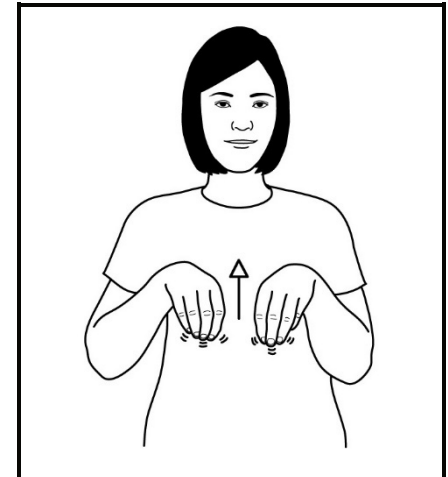
BEACH



Diagrams, text and descriptions ©SIGNALONG

Supporting closed hand (palm down, pointing in); working flat hand (palm down, pointing forward) moves out along supporting forearm with wavy motion.

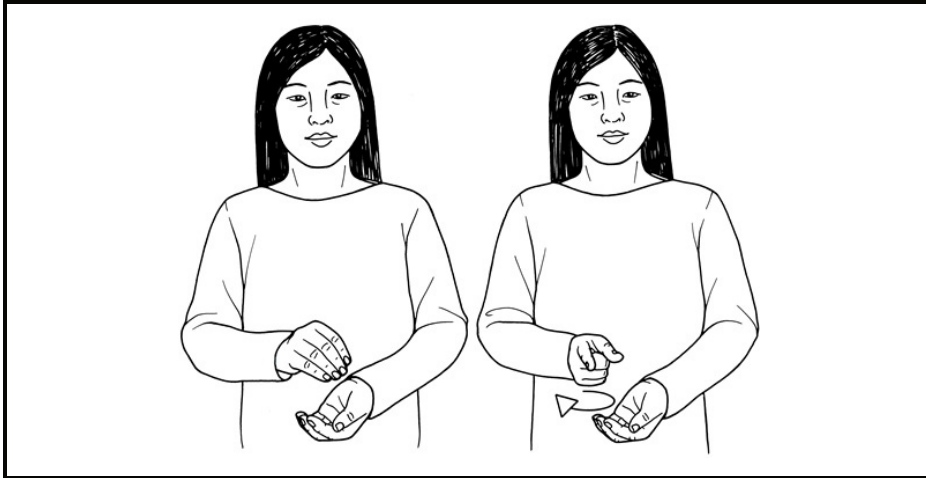
SAND



Diagrams, text and descriptions ©SIGNALONG

Bunched hands (palms back, pointing down) move up as thumbs and fingertips rub together.

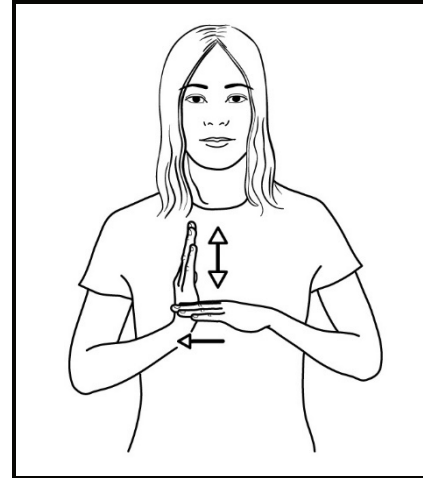
DOUGHNUT (RING)



Cupped hands in front of body (palms facing, pointing forward/in) working hand above; then working index hand (palm in, pointing forward) circles out.

Diagrams, text and descriptions ©SIGNALONG

SAILING BOAT



Working flat hand (palm in, pointing up) held against index finger of supporting flat hand (palm down, pointing in); formation moves up and down while travelling in appropriate direction.
Directional sign.

Diagrams, text and descriptions ©SIGNALONG

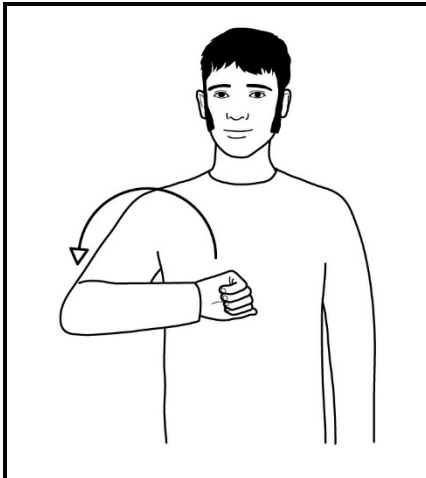
CANDYFLOSS



Supporting fist (palm in, pointing forward) mimes holding stick; working parallel bent hand flexes in a curve over 'stick' to show shape of candyfloss.

Diagrams, text and descriptions ©SIGNALONG

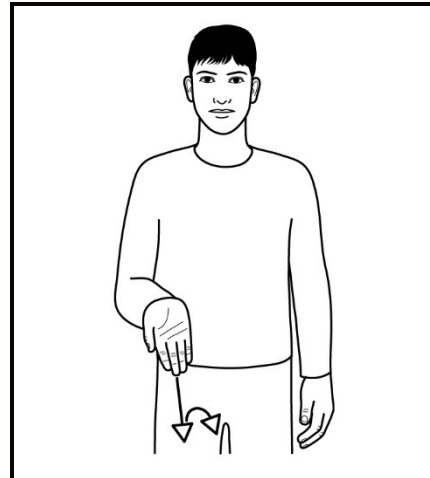
BUCKET



Working, loosely closed hand (palm forward, pointing in) traces shape of bucket handle, finishing palm forward, pointing out.

Diagrams, text and descriptions ©SIGNALONG

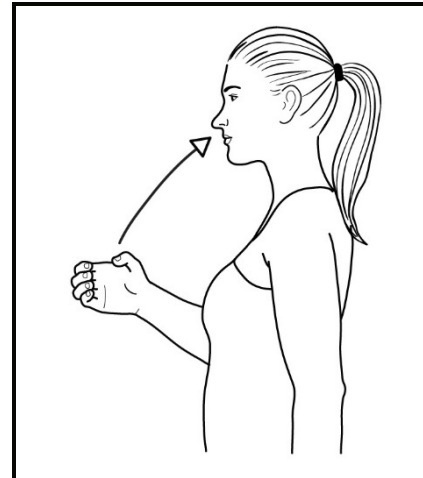
SPADE



Working flat hand (palm forward/up, pointing forward/down) moves firmly forward/down and then turns to palm back/down, pointing forward/down.

Diagrams, text and descriptions ©SIGNALONG

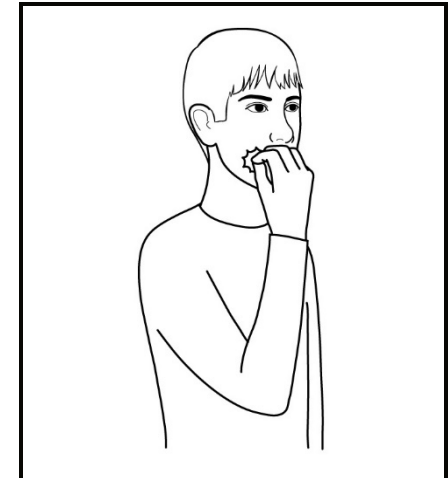
DRINK



Working full "C" hand (palm in, pointing forward) moves up to mouth turning to point up.

Diagrams, text and descriptions ©SIGNALONG

FOOD



Fingertips of working bunched hand (palm back, pointing up) touch face at side of mouth.

Diagrams, text and descriptions ©SIGNALONG