

**You will need:**

**Small Scissors / Stick glue / Sticky tape**

### **Advent Instructions**

- 1) **Print out all sheet as A4.**
- 2) Glue **Sheet 1** over the edge of **Sheet 2** and secure with sticky tape on the reverse side.
- 3) Cut the white strip off the right hand-side of **Sheet 3**
- 4) Then, carefully cut along the dotted lines of all the doors on **Sheet 3 & 4**
- 5) Place glue along the dotted lines on **Sheet 2** and position **Sheet 4** on top, pressing gently to stick
- 6) Place glue along the dotted lines on **Sheet 1** and position **Sheet 3** on top, pressing gently to stick On
- 7) **Sheet 3** glue the top and bottom right hand-side of the sheet to **Sheet 4** (avoid the centre doors)
- 8) Finally, glue around the outer edges of the Advent Calendar and there you have it....

**YOUR VERY OWN SIGNALONG ADVENT CALANDER – ENJOY!**

**&**

**MERRY CHRISTMAS**

## CHIMNEY



Supporting full "C" hand (palm in, pointing forward); working full "O" hand (palm back, pointing up) inside "C" moves up, opening and closing twice.

Sheet 1

## CRACKER



Working fist (palm in/back, pointing down); supporting fist (palm down, pointing in/forward) a little way in front and to the side; hands pull apart sharply.

Sheet 1

## SELECTION PACK



Working open pinched hand (palm forward, pointing up) moves back to signer, becoming closed pinched hand; then working "R" hand (palm in, pointing up) makes inward circle on chin.

Sheet 1

## ELF



"L" hands (palms in, pointing forward) beside ears move up closing to pinched hands to show pointed ears.

## CHRISTMAS



Working flat hand (palm down, pointing forward/in) above supporting flat hand (palm down, pointing forward/in); working hand pulls away changing to closed hand on back of supporting hand.

Sheet 1

## GINGERBREAD HOUSE



Make letter shapes "G"; "B"; then flat hands (palms in/down, pointing in/up) with fingertips touching move apart and down to show roof.

Sheet 1

## WISHING

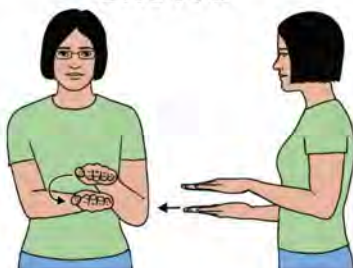
YOU

A

HAPPY

CHRISTMAS!

## GROTTO



Flat hands (palms down, pointing forward) thumbs touching; then working hand circles out/down to palm up, pointing forward below supporting palm; then moves forwards a short way.

Sheet 1

## CHRISTMAS CARD



Working flat hand (palm down, pointing forward/in) above supporting flat hand (palm down, pointing forward/in); working hand pulls away changing to closed hand on back of supporting hand; then flat hands together (palms in, pointing up) move to palms back with little fingers maintaining contact.

Sheet 1

## HAPPY



Working cupped hand strikes twice across supporting palm moving towards heel of hand.

## SANTA



Working parallel bent hand (palm up/out) brushes down chin towards waist, fingers closing on to thumb.

Sheet 1

## CHRISTMAS JUMPER



Working flat hand (palm down, pointing forward/in) above supporting flat hand (palm down, pointing forward/in); working hand pulls away changing to closed hand on back of supporting hand; then closed hands (palms back, pointing in) contact upper chest and then lower chest.

Sheet 1

## STOCKING



Working wide full "C" hand (palm forward, pointing up) moves down/out, changes to palm forward, pointing out and moves down/in.

Sheet 1

## CHRISTMAS PUDDING



Working flat hand (palm down, pointing forward/in) above supporting flat hand (palm down, pointing forward/in); working hand pulls away changing to closed hand on back of supporting hand; then working closed hand mimes spooning from supporting flat hand (palm up, pointing forward/in) to mouth.



## CHRISTMAS CAROL



"C" hands (palms in, pointing up) move upwards in alternate forward circles from mouth.

Sheet 2

## COOKIE



Working flat hand (palm down, pointing forward) held in front of body changes to clawed hand (palm up, pointing in) taps supporting elbow twice. Supporting arm is held relaxed across the body.

Sheet 2

## WREATH



Working bunched hand (palm back, pointing up) held under the nose, waves from side to side; then full "C" hands (palms back, pointing down) make small outward circle in front of body turning to palms forward.

Sheet 2

## DECORATIONS

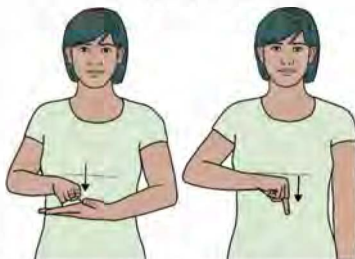


Relaxed clawed hands (palms up/back, pointing forward) at head height, move out in small arcs.

Sheet 2

## from everyone at SIGNALONG

### NORTH POLE



Supporting open hand (palm up, pointing in); working "N" hand (palm down, pointing forward) moves down to rest on supporting palm; then bent index hand (palm down, pointing in) moves down a short way.

Sheet 2

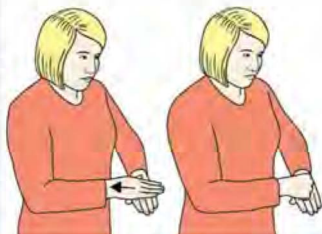
### CHRISTMAS EVE



Working flat hand (palm down, pointing forward/in) above supporting flat hand (palm down, pointing forward/in); working hand pulls away changing to closed hand on back of supporting hand; then supporting flat hand (palm down, pointing forward), working flat hand (palm back, pointing in) rests on supporting hand and arcs back to rest on supporting forearm.

Sheet 2

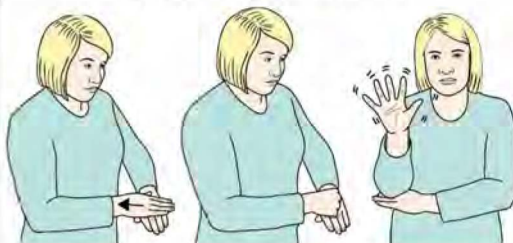
### CHRISTMAS



Working flat hand (palm down, pointing forward/in) above supporting flat hand (palm down, pointing forward/in); working hand pulls away changing to closed hand on back of supporting hand.

Sheet 2

### CHRISTMAS TREE



Working flat hand (palm down, pointing forward/in) above supporting flat hand (palm down, pointing forward/in); working hand pulls away changing to closed hand on back of supporting hand; then elbow of working open hand (palm forward, pointing up) rests on back of supporting hand (palm down, pointing in); working open hand shakes from side to side.

Sheet 2

### SLEIGH



Tucked hands (palms in, pointing up) bend away from body at wrists to palms in, pointing forward; then supporting flat hand (palm back, pointing in); then working flat hand (palm back, pointing down) against back of supporting hand, slides down and off hand, turning to palm down, pointing forward.

Sheet 2

### REINDEER



Open hands (palms forward, pointing up), thumb tips touching each side of forehead, move forwards/out in two small arcs.

Sheet 2

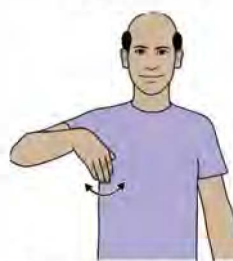
### CHRISTMAS LIST



Working flat hand (palm down, pointing forward/in) above supporting flat hand (palm down, pointing forward/in); working hand pulls away changing to closed hand on back of supporting hand; then working thumb hand moves across fingers of supporting flat hand in a series of small arcs.

Sheet 2

### BELLS



Working flat hand at shoulder height bent at wrist (palm back, pointing down) swings from side to side.

Sheet 2

### MISTLETOE



Working bunched hand (palm down/back, pointing down) held above head, sways slightly while lips pucker.



16



11



13



20



23



5



8



17



21



12



1



22



Sheet 3



Sig



4



10



15



7



25

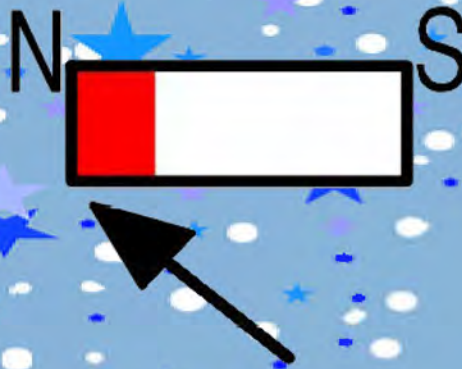
n  
the  
communication charity  
along  
charity no: 1039788



Sheet 4

Widgit Symbols ©  
Widgit Software 2014  
www.widgit.com

3



24



19



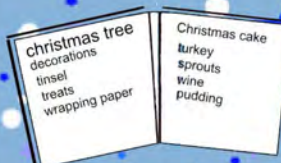
6



9



2



18



14

