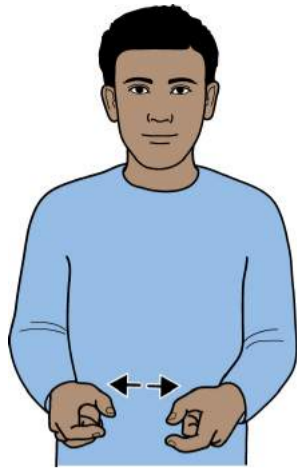


POLLING CARD



Supporting flat hand (palm back/up pointing forward/in) working index hand (palm back/up pointing forward/in) draws a cross on supporting hand; then "C" hands (palms in, pointing forward) together, move apart slightly.

POLICIES



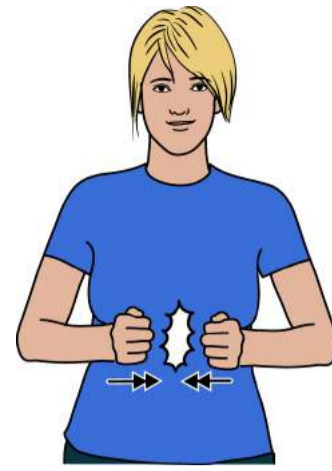
Working index (palm up, pointing forward/in) moves back over supporting flat hand (palm up, pointing forward/in) tapping three times.

POLLING STATION



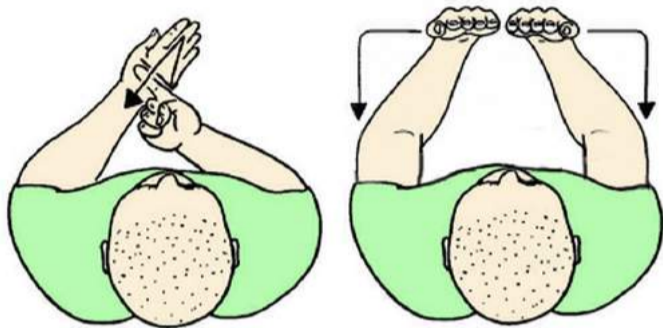
Supporting flat hand (palm back/up pointing forward/in) working index hand (palm back/up pointing forward/in) draws a cross on supporting hand; then working bent hand (palm in, pointing up) in front of shoulder.

BALLOT PAPER



Supporting flat hand (palm back/up pointing forward/in) working index hand (palm back/up pointing forward/in) draws a cross on supporting hand; then closed hands (palms in, pointing forward); knuckles tap together twice.

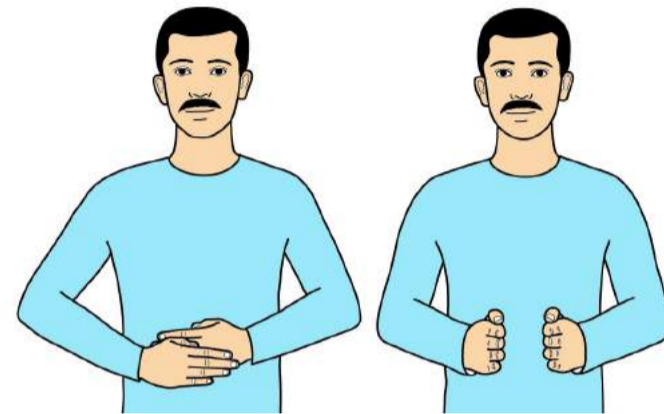
POLLING BOOTH



Supporting flat hand (palm back/up pointing forward/in) working index hand (palm back/up pointing forward/in) draws a cross on supporting hand; then flat hands (palms back, pointing up) held together; separate, turn to palms in and move back.



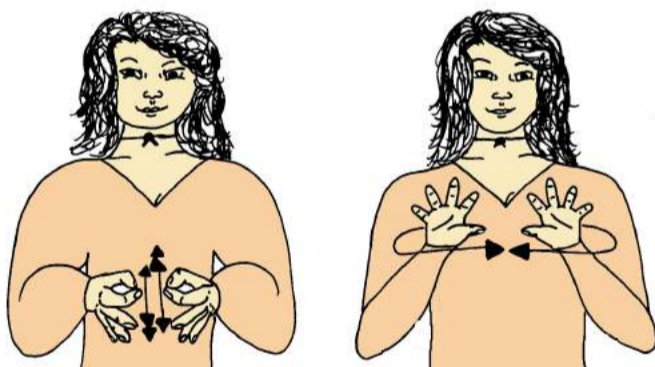
BALLOT BOX



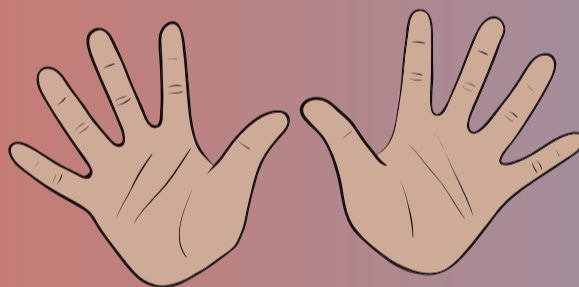
Supporting flat hand (palm back/up pointing forward/in) working index hand (palm back/up pointing forward/in) draws a cross on supporting hand; then flat hands (palms back, pointing in) working hand in front, move to palms in, pointing forward, showing shape and size of box.

LET'S VOTE

POLITICAL PARTY



"O" hands (palms in, pointing forward) move up and down alternately, then open hands (palms forward, pointing up) side by side in front of body circle forwards turning to palms back.



© The SIGNALONG Group
www.signalong.org.uk
info@signalong.org.uk

POSTAL VOTE



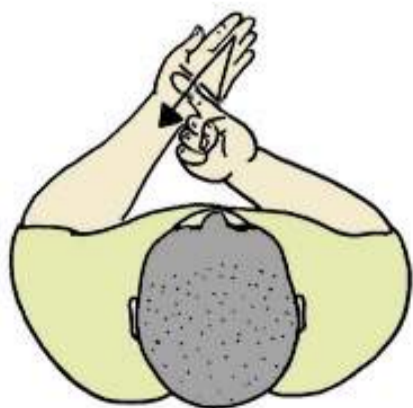
Supporting bent hand (palm in, pointing up); working bunched hand (palm down, pointing forward) below, moves forwards changing to open hand; then supporting flat hand (palm back/up pointing forward/in) working index hand (palm back/up pointing forward/in) draws a cross on supporting hand.

TICK / CROSS



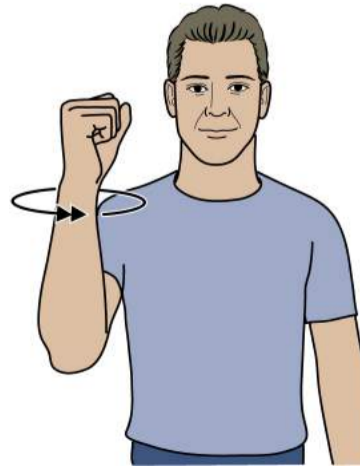
Appropriate mime with working index finger on supporting flat hand.

TO VOTE



Supporting flat hand (palm back/up pointing forward/in) working index hand (palm back/up pointing forward/in) draws a cross on supporting hand.

WIN



Working fist (palm in, pointing up) held up by head, circles in vigorously several times.

LOSE



Full "O" hands (palms down, pointing forward) move forward/ down changing to open hands (palms down, pointing forward/out).

Disabled people's voting rights

Local authorities now have to take proactive steps to ensure that polling stations don't disadvantage disabled people¹.

All voters have a right to vote independently and in secret. A person who is registered to vote or who has been officially appointed as a proxy voter cannot be refused a ballot paper or the opportunity to vote on the grounds of mental or physical incapacity.

Polling station staff must ensure that disabled voters are not offered a lower standard of service than other voters and should be able to explain what assistance is available to disabled voters wishing to vote in person at a polling station.

Disabled voters are also entitled to:

The right to request assistance to mark the ballot paper

Disabled voters may request the assistance of the Presiding Officer to mark the ballot paper for them. Alternatively, they can bring someone with them to help them vote (this person must be an immediate family member over 18 years old or a qualified elector).

Tactile voting device

This is a plastic device that is fixed onto the ballot paper so visually impaired people or those with limited dexterity can mark their ballot paper in secret.

Large-print version of the ballot paper

A large-print version of the ballot paper should be clearly displayed inside the polling station and a copy can be given to voters to take with them into the polling booth. A voter can't vote on the large-print version, but it can be used for reference.

Assistance to electors unable to gain access to the polling station

It is the responsibility of the relevant council to designate polling places within their area and to keep these under review. In designating polling places, the council must have regard to accessibility for disabled voters. If an elector is unable to enter the polling station because of physical disability, the Presiding Officer may take the ballot paper to the elector.

If you have any problems on election day, you should call your local authority to try to resolve this.

You can also call the Electoral Commission on 0333 103 1928 or the Welsh language line on 0333 103 1929 for further guidance.

¹ Similar arrangements apply in Northern Ireland, but they are the responsibility of the Electoral Office for Northern Ireland.