

The Signalong approach to sign-supported communication offers service providers and practitioners a consistent method of accessing the largest published vocabulary of signs based on British Sign Language. While the manuals published by the charity are intended to be self-explanatory, users are more confident if they have learned in a structured environment.

Signalong has a national network of registered Tutors able to deliver a range of courses which can be adapted to the requirements of different environments.

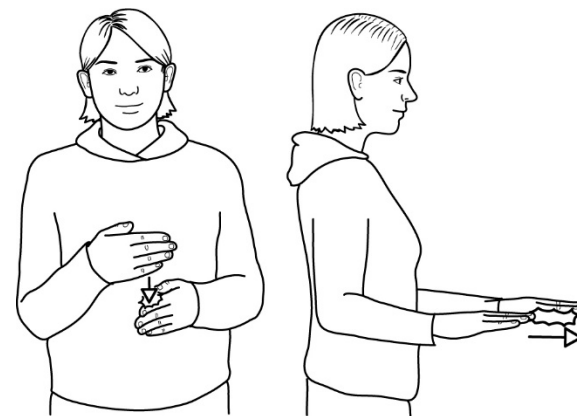
For more information please contact one of our Tutors advertised on our website or:

Signalong  
1 Old Winery Business Park,  
Cawston, Norwich, Norfolk,  
NR10 4FE

Tel: 0330 120 0770



The Signalong group is a registered charity, no 1039788, and a company limited by guarantee.



## Signalong Training

[www.signalong.org.uk](http://www.signalong.org.uk)

### Course aims:

To understand the purpose and use of Signalong.  
To use signing skills and some signs to interact and communicate with others.

### Objectives:

What is Communication?\*

Why Sign?

The History, Philosophy and Methodology of Signalong

Name Signing

Core Vocabulary

Generalisation / Symbolic Understanding\*

Key Words

### Outcomes:

To identify the Methodology of Signalong

To understand how sign-supported communication supports children and adults with speech, language and communication needs (SLCN).

To understand the importance of generalisation and symbolic understanding when teaching sign-supported communication.\*

To communicate effectively using a Total Communication approach\*

\*not applicable to all courses

### Workshops

The course will cover a brief history, philosophy and methodology of Signalong before introducing vocabulary. We teach approximately 60 core vocabulary signs in the ½ day and 100 in 1 day course. However, you will learn the necessary skills to access any of our sign vocabulary. We also provide activities to put the vocabulary into context i.e. sentence practice, plays etc. We offer workshops based on our Going to School, Phase 1 and Adult Learning Disability Core Vocabulary manuals. However, we can provide training on any of our manuals, subject to adequate notice.

### Introductory Courses

This training can be tailored to the needs of any organisation and is useful to introduce communication skills to new staff and family members. The emphasis is on the practical application of signing. Introductory courses are 8 hours delivered over 2 sessions and can be formally certificated.

### Foundation Courses

The Foundation Course develops skills to a level where practitioners can apply signing in their own environment and includes some elements of communication theory. It is a 15-hour course normally delivered over an extended period, and is the basic building block of SIGNALONG training and the Tutor training programme.

### Tutor Training

This is not a course for beginners but for those who wish to train others. For details please contact [tracygoode@signalong.org.uk](mailto:tracygoode@signalong.org.uk)

### What will it cost?

Course Title	Trainees	Duration	Cost
½ Day Workshop	15	4hrs	£300
½ Day Workshop (2 Tutors)	20	4hrs	£500
1 Day Workshop	15	7hrs	£500
1 Day Workshop (2 Tutors)	20	7hrs	£800
Introductory (2 sessions)	12	8hrs	£600
Foundation (per person)	12	15hrs	£100

Please note these costs do not include manuals and certificates, and exclude expenses i.e. travel, and accommodation if we do not have a Tutor available in your area.