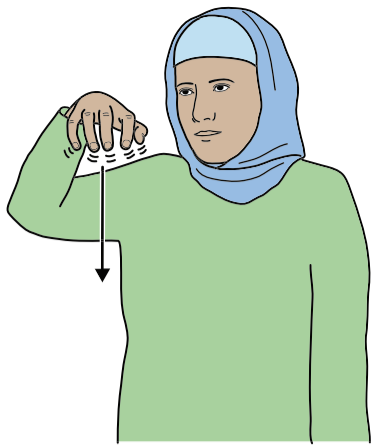
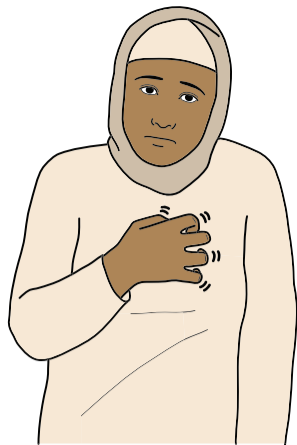


SPIDER



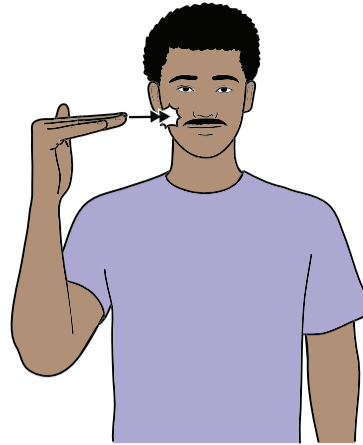
Working clawed hand (palm down, pointing forward) by side of head, moves down with fingers wiggling.

SCARY



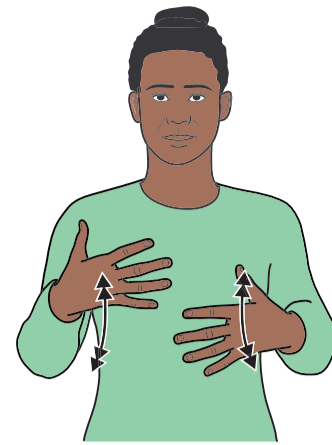
Working clawed hand (palm back, pointing in/up) quivers over heart.
Shoulders hunch, body shrinks back.

PRETEND



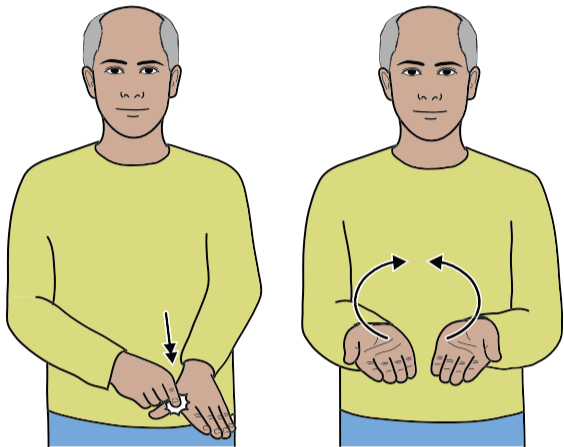
Working bent hand (palm in, pointing up) taps against cheek twice.

TO DRESS



Open hands (palms back, pointing in) move alternately up and down in front of body.
To sign "dress up" precede with "pretend"

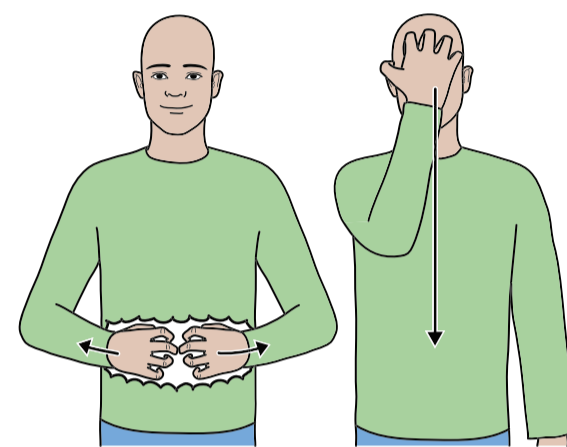
PUMPKIN



Make letter shape "Y", tapping twice; then flat hands (palms up, pointing forward) circle up and in to show shape of pumpkin.



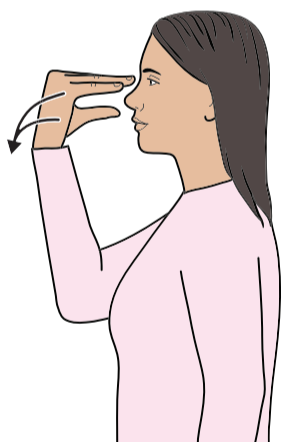
SKELETON



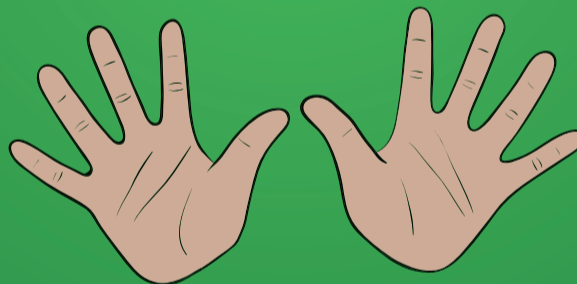
Clawed hands (palms back, pointing in) move out across body; then working hand moves up to head (palm in/back, pointing up) and moves down body.

HALLOWEEN / BONFIRE NIGHT

WITCH



Working parallel bent hand (palm back, pointing up) in front of nose, pulls down closing to bunched hand, palm up.



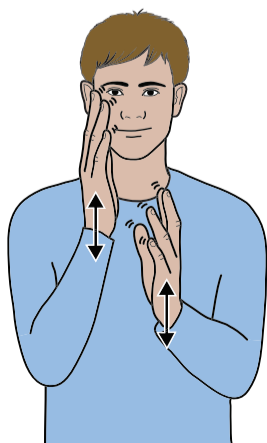
© The SIGNALONG Group
www.signalong.org.uk
E-mail: info@signalong.org.uk

GHOST



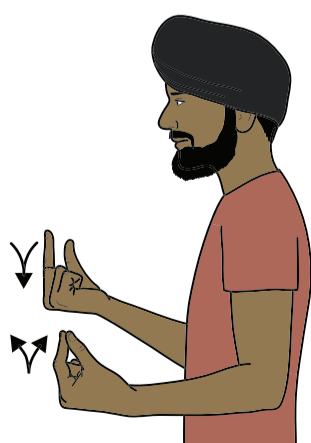
Open hands (palms back, pointing down) at head height quiver.
Body looms forwards.

FIRE



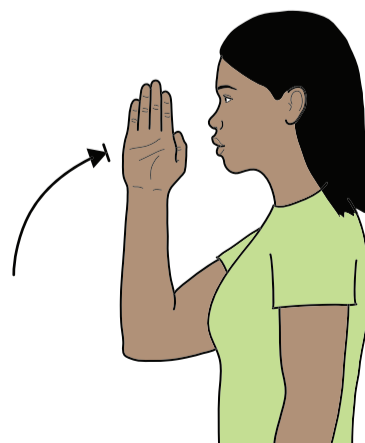
Open hands (palms in, pointing up) move up and down alternately with fingers flickering.

FIREWORKS



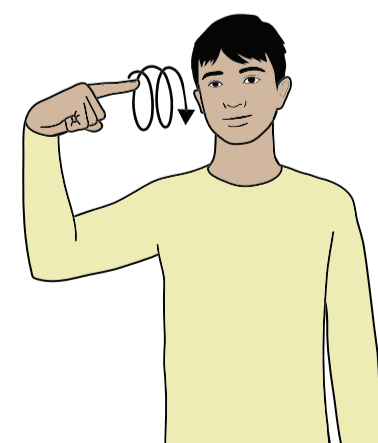
Closed pinched hands (palms up, pointing forward) sharply move up and down alternately while fingers and thumbs open and close.

DANGEROUS



Working flat hand (palm in, pointing forward) moves up sharply to stop in front of nose, pointing up.

NOISY



Working index hand (palm down, pointing in) travels towards ear in large forward circles.